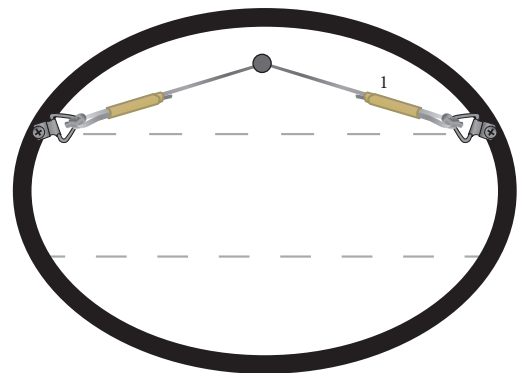
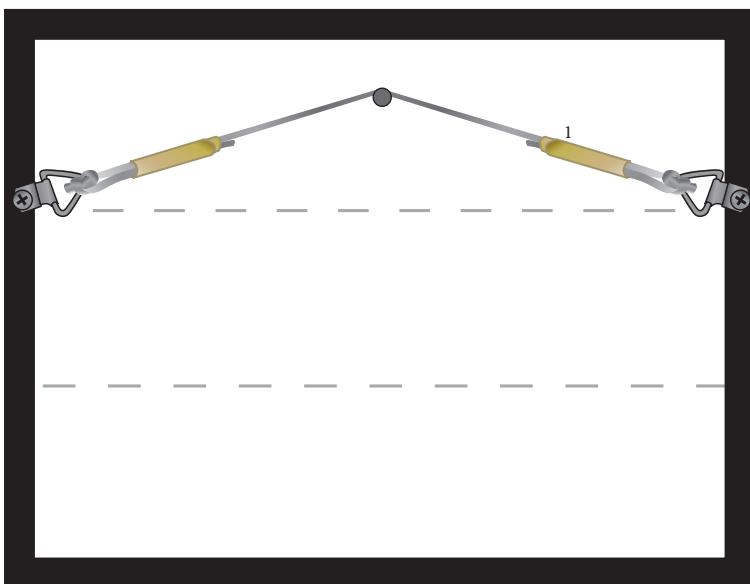


Professional Presentation For Exhibition

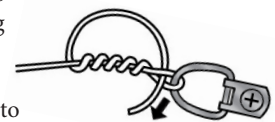
Ready to Hang

Present your art for an exhibition so it is ready to hang. Ensure it will not damage your or other people's work. The hanging team can refuse your work if it doesn't meet gallery standards

- D-rings should be positioned approximately one third down from the top (for hard wood, you may need to start the screw holes with an awl or meat skewer). Ensure screws go into the frame straight
- Ensure the cord is not slack — it shouldn't be visible above the top of the frame when it is hanging on the wall (bind ends of cord to prevent fraying¹)
- Make sure cord (or string) is non-stretchy



Use secure knots to tie cord/string to D-rings
(then bind ends to prevent fraying¹)





NOTES

MAI gallery supplies standard nails for hanging. If your work is very heavy, please use extra grunty hardware on your work, and supply stronger fixings for wall, to avoid damage.

Remember that glass adds extra weight to a frame (you may need double screw D-rings).

For 3D pieces, it is very difficult to align a nail with a hole drilled on the back — consider alternatives hanging arrangements (gallery is not liable if insufficiently strung work falls off the wall).

<p>ALWAYS use D-Rings for hanging</p>  <p>use double screw D-rings if work is heavy></p>		<p>these screws can damage stacked artwork — don't use them</p>  <p>flip tooth hangers are not suitable for exhibition hanging (add D-rings and cord)</p>
--	---	---